

SWORD

UPGRADE YOUR BUSINESS

SwordActiveRisk

ACTIVE RISK MANAGER

Delivering Successful Project Risk Management

How well do you know the cost, schedule and technical risks that could affect your project? It is a known fact that most projects are not delivered on time or to budget. When a project schedule goes off-track, costs increase and quality often decreases as well. Active Risk Manager is the proven solution to help your project stay on track.

Solution To Your Needs

Active Risk Manager (ARM) is the world's leading web-based risk management system, facilitating the communication of risk to the right people at the right time in a secure fashion. ARM has been designed with the help of leading organizations worldwide, both public and private, to comply with current and evolving industry standards Active Risk Manager can map directly to your risk processes, helping to deliver a standard risk process across program management.

Active Risk Manager continues to deliver market leading risk management capability that enables a proven and effective return on project management. This return is achieved through the integration of projects into the risk management process, target-driven risk management, and a systemized approach to ensuring success in meeting program objectives.

Supporting A Consistent Risk Process

The common goal for implementing a single risk management system is to consolidate multiple risk processes throughout the organization. Active Risk Manager allows for risks across multiple projects to be compared and reported in a consistent fashion while maintaining the individual projects's independence. By delivering a common and consistent risk process, ARM ensures that its users realize the following key benefits:



- **Delivering Financial Benefit**

Forecasts risk exposure off post-mitigation levels increasing competitiveness and winning more business. Facilitates automatic report generation.

- **Improving Performance**

Communicates real-time data to all key stakeholders, helping management make quicker and more informed decisions on key risks.

- **Assuring Confidence**

Active Risk is a committed long-term supplier. ARM is proven within multiple industry sectors.

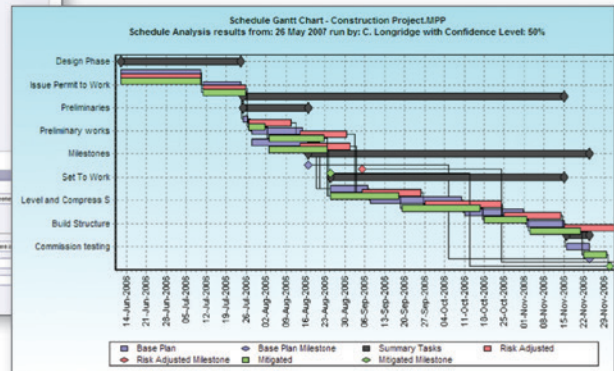
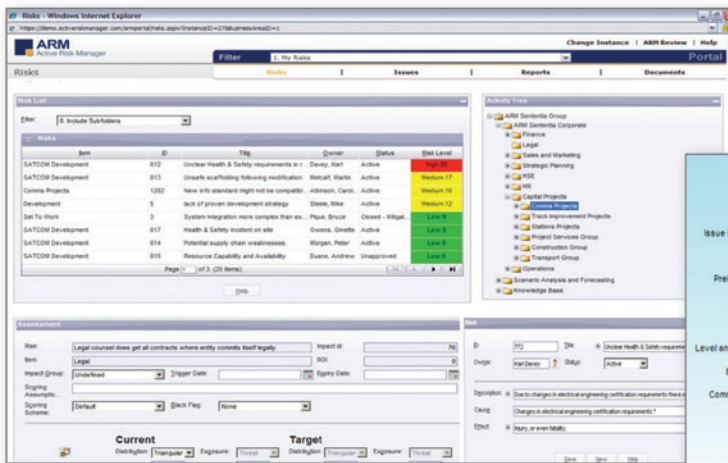
- **Ensuring Governance and Compliance**

Increased reliability with full audit trails for control, ensuring compliance with international risk management standards.

- **Enabling Delivery Success**

A robust, scalable solution with multiple levels of security delivering your risk management process and methodology.

Arm For Project Risk Management



Active Risk Manager is highly configurable, offering a single software package to support your risk management methodology across the enterprise rather than enforcing one upon you. It has been designed with “ease of use” in mind, supporting individual users whatever their role, ensuring buy-in and facilitating free communication of risks and opportunities. This “ease of use” is one of the many elements already proven to secure the successful delivery of Active Risk Manager to tens, hundreds, or thousands of users within your organization.

Key Capabilities

- **Web-based** – supporting LAN’s, WAN’s, VPN’s
- **Compliance with common standards** – ISO 31000, PRAM, PMIBoK, RAMP, BSS6079, AS/NZS 4360:2004 amongst others.
- **Identifies, assesses, manages, controls and communicates risks, issues and opportunities.**
- **Supports** – both the qualitative and quantitative assessment of risks and responses.
- **Real-time integration** – with MS Project, Primavera, Telelogic Doors and Cradle.
- Provides a **full risk management audit trail.**
- **Multiple levels of security** – assures that only appropriate risk information is shared.
- Create risk relationships where **the same risk may have inter-related impacts over single or multiple projects**

- **Comprehensive standard and custom reports** – highly customizable, benefiting from the use of advanced filtering capabilities.
- Fully integrated **Monte Carlo** cost and schedule analysis.
- **Automatic email alert notifications** – enabling proactive risk mitigation.
- **Fully scalable architecture** – based on MS technology and supporting 10 to 10,000+ users.
- **Supports both MS SQL Server and Oracle databases** – also interfaces with any leading Portal environment.
- **Full user authentication** – and SSL 128-bit encryption.

Active Risk Manager Customer Group

The world’s most renowned risk-taking organizations in the Defense, Government, Manufacturing, Oil & Gas, Pharmaceutical, Space, Transport and Utilities sectors come together in the UK and US to discuss market needs and subsequent demands for Active Risk Manager. As a member of the Customer Group you would benefit from the enhancements sponsored by customers, ensuring that ARM remains the world’s leading, and most widely-deployed Enterprise Risk Management system. ARM will continue to invest heavily in the project risk management process.

EMEA Headquarters

Sword Active Risk
1 Grenfell Road
Maidenhead
Berks SL6 1HN
UNITED KINGDOM
Tel: +44 (0)1628 582500

www.sword-activerisk.com

US Headquarters

Sword Active Risk, Inc.
13221 Woodland Park Road
Suite 440
Herndon, VA 20171
UNITED STATES
Tel: +1 (703) 673 9580

info@sword-activerisk.com

Australia

Sword Active Risk Pty Ltd
40/140 William Street
Melbourne
VIC 3000
AUSTRALIA
Tel: +61 3 9229 3850

Twitter @SwordActiveRisk

